



## TROPONIN I

The One Step Myoglobin/CK-MB/Troponin I Combo Test (Whole Blood/Serum/Plasma) is a rapid chromatographic immunoassay for the qualitative detection of human Myoglobin, CK MB and cardiac Troponin I in whole blood, serum or plasma as an aid in the diagnosis of myocardial infarction.

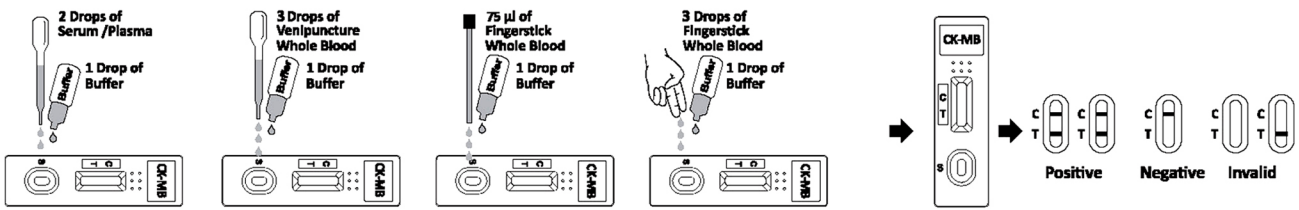
### How is the test used?

Troponin tests are primarily ordered to help diagnose a heart attack and rule out other conditions with similar signs and symptoms. Troponin tests are also sometimes used to evaluate people for heart injury due to causes other than a heart attack or to distinguish signs and symptoms such as chest pain that may be due to other causes. Testing may also be done to evaluate people with angina if their signs and symptoms worsen.

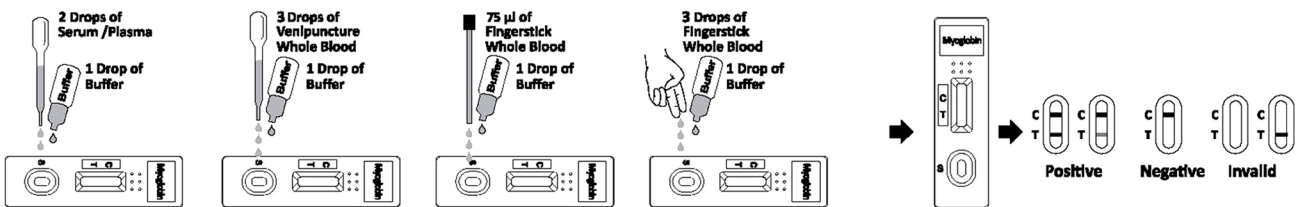
Troponin is the preferred test for a suspected heart attack because it is more specific for heart injury than other tests (which may be elevated in the blood with skeletal muscle injury) and remain elevated for a longer period of time.

### Test Procedure & Interpretation

#### • CCK-402



#### • CMY-402



#### • CTI-402

